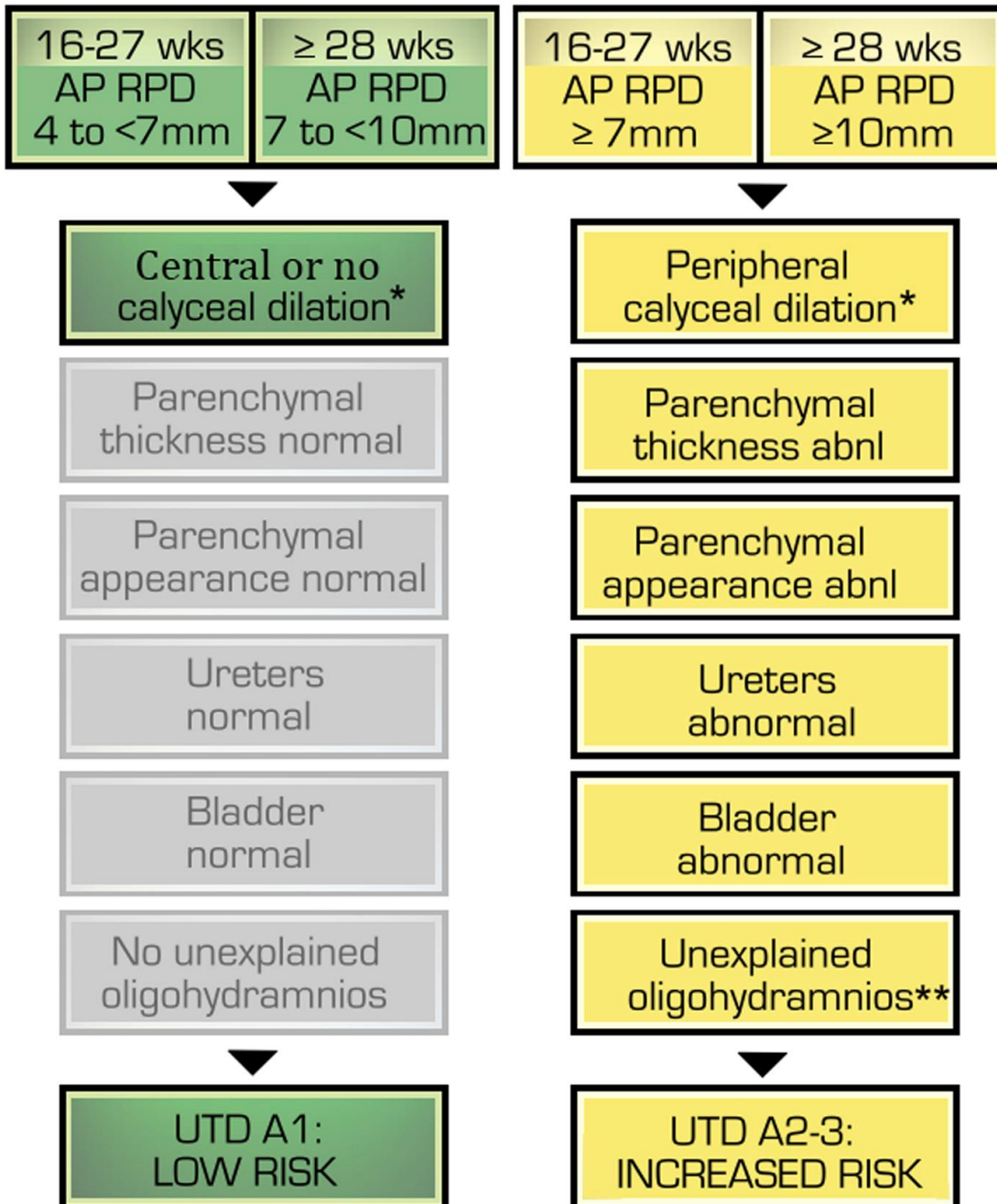


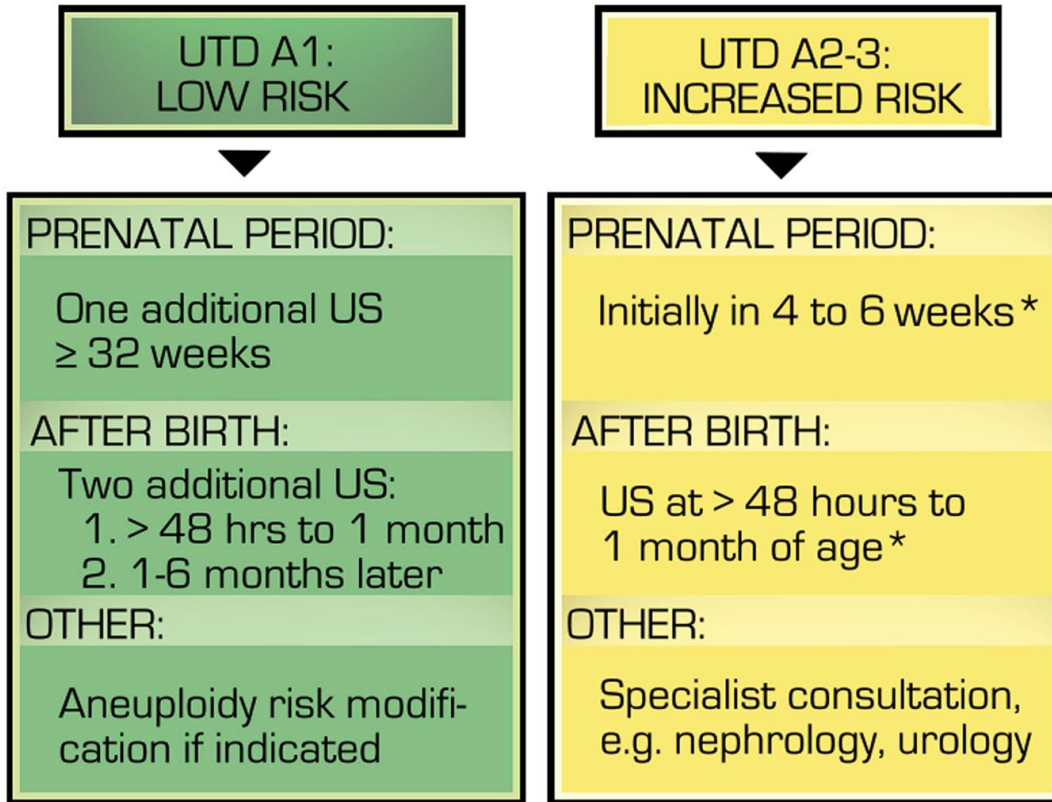
## PRENATAL PRESENTATION



\*Central and peripheral calyceal dilation may be difficult to evaluate early in gestation

\*\*Oligohydramnios is suspected to result from a GU cause

## RISK-BASED MANAGEMENT, PRENATAL DIAGNOSIS



\* certain situations (e.g. posterior urethral valves, bilateral severe hydronephrosis) may require more expedient follow up